

DOUBLE-ENDED BEAM
RL7000SS

Stainless Steel, Environmentally Sealed, NTEP Certified 1:5,000 Class III/1:10,000 IIII Multiple Cell, IP67



Picture is a representation of actual product.

Approvals

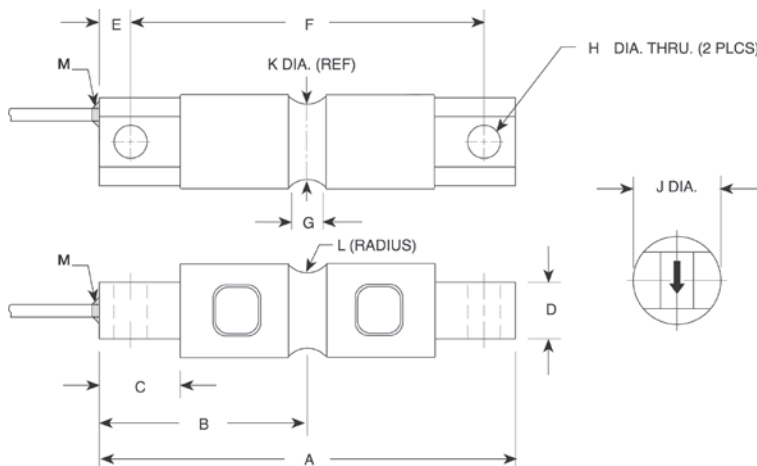


Order Information

Load Rating	Part #	Est. Weight	Price
NTEP Certified			
10,000 lb	30432	5 lb	Consult
20,000 lb	30433	6 lb	Consult
30,000 lb	30434	22 lb	Consult
40,000 lb	30435	22 lb	Consult
50,000 lb	30436	22 lb	Consult
60,000 lb	30437	22 lb	Consult
100,000 lb	30444	30 lb	Consult
Non-NTEP Certified			
5,000 lb	30431	5 lb	Consult
150,000 lb	30445	30 lb	Consult

Dimensions

Rated Capacity	A	B	C	D	E	F	G	H	J	K	L	M
lb/in												
5,000 to 10,000	8.12	4.06	1.44	1.12	0.62	6.88	0.62	0.66	1.70	1.48	0.50	1/4-18 NPT
20,000	8.12	4.06	1.44	1.12	0.62	6.88	0.84	0.66	1.95	1.48	0.50	1/4-18 NPT
30,000 to 60,000	10.25	5.12	1.88	2.37	0.88	8.50	1.00	1.06	3.20	2.73	1.00	1/2-14 NPT
100,000	11.25	5.62	1.88	2.50	0.88	9.50	1.00	1.06	3.50	3.24	1.50	1/2-14 NPT
150,000	11.25	5.62	1.88	2.80	0.88	9.50	1.25	1.06	3.90	3.64	1.50	1/2-14 NPT



Interchangeable Products

- RICE LAKE WEIGHING SYSTEMS
RL72019SS..... page 127
- RICE LAKE WEIGHING SYSTEMS
RL72020SS..... page 125
- VPG® REVERSE
9103..... page 256
- METTLER TOLEDO®
SLD-530

Weigh Module Available

- RICE LAKE WEIGHING SYSTEMS
EZ Mount 1..... page 62

Specifications

- Full Scale Output:**
3.0 mV/V
- Output Resistance:**
700 (± 7) ohm
- Input Resistance:**
700 (± 7) ohm
- Material/Finish:**
Stainless steel
- Temperature:**
Compensated range
0 °F to 150 °F (-18 °C to 65 °C)
Operating range
0 °F to 150 °F (-18 °C to 65 °C)
- Seal Type:**
Environmentally sealed, IP67
- Safe Overload:**
150% full scale
- Safe Sideload:**
100% full scale
- Rated Excitation:**
5 to 10 V AC/DC (15 V max)
- Non-repeatability:**
0.02% full scale
- Combined Error:**
0.3% full scale
- Insulation Resistance:**
5,000 megohm
- Deflection at Capacity:**
5,000 lb: 0.02 in
10,000 lb: 0.025 in
20,000 lb: 0.042 in
30,000 to 50,000 lb: 0.02 in
60,000 lb: 0.025 in
100,000 to 150,000 lb: 0.02 in
- Cable Length:**
30 ft
- Cable Diameter:**
0.295 in
Polyurethane jacket
- Cable Color Code:**
Red +Excitation
Black -Excitation
Green +Signal
White -Signal
- Warranty:**
Two-year limited
- Approvals:**
cFMus
NTEP 12-050

RICE LAKE
LOAD CELLS